



Altan Rio has exclusive rights to the Southern Cross North Project including the extensive gold rich Frasers - Corinthian Shear Zone (FCSZ) extending North of Southern Cross, Western Australia. FCSZ is a major gold mineralized structure hosting ~10Moz of historical and current producing gold mines.

COMPANY CONCEPT

The Surveyor Project presents a significant opportunity for near term cashflow with the potential to define shallow toll treatable tonnes of gold ore within an established and short economic trucking distance of current and capable milling operations. The company plans to target the near term cash flow opportunities to fund ongoing exploration.

Southern Cross North consists of 15 granted Prospecting Licenses covering 23.7 square km within ~ 30km to the Marvel Lock toll treatment mill (2.5 Mtpa).

The Project represents the majority of the Northern half of the mineralised belt extending south from the Copperhead mine site for ~28 km to the town boundary of Southern Cross town.

WORLD CLASS GOLD MINES

The first substantial gold production from the sequence north of Southern Cross was from the Copperhead Mine at Bullfinch where Great Western Consolidated NL (a subsidiary of Western Mining Corporation Limited) produced in the 1950s.

The majority of this production has come from within the greenstone sequences and ranges from Copperhead in the north to Bounty in the south and incorporates the Westonia deposits in the west.

The Southern Cross Greenstone Belt has been a prolific producer of gold and is responsible for >10 million ounces of gold production. The project tenure is adjacent to numerous high-grade past producers including Frasers, Golden Pig and Copperhead. (see maps overleaf)

Northern Territory, AUSTRALIA Base Metals – Under Application

Historic Daly River Copper Mine and base metal mineral field. ~12km of NNE trending strike. Previous drilling intersected up to; 26m @ 6.3% Zn and 8.5m @ 21.6%Zn.

Peko(1991) estimated target of 213,000 tonnes @ 18.7% Zn and 549,000 tonnes @ 6.6 % Zn in southern and northern deposits with a large unexplored area with identified target areas lies to the north and east of these resources.

Chandman Project WESTERN MONGOLIA

Chandman is a recently discovered “grass-roots” trend of porphyry copper-gold systems spanning more than 50 km of strike length. Altan Rio's license block covers all known anomalies and represents the dominant land position in the region.

Recent work including geophysical surveys, geochemistry, sampling, trenching and diamond drilling.

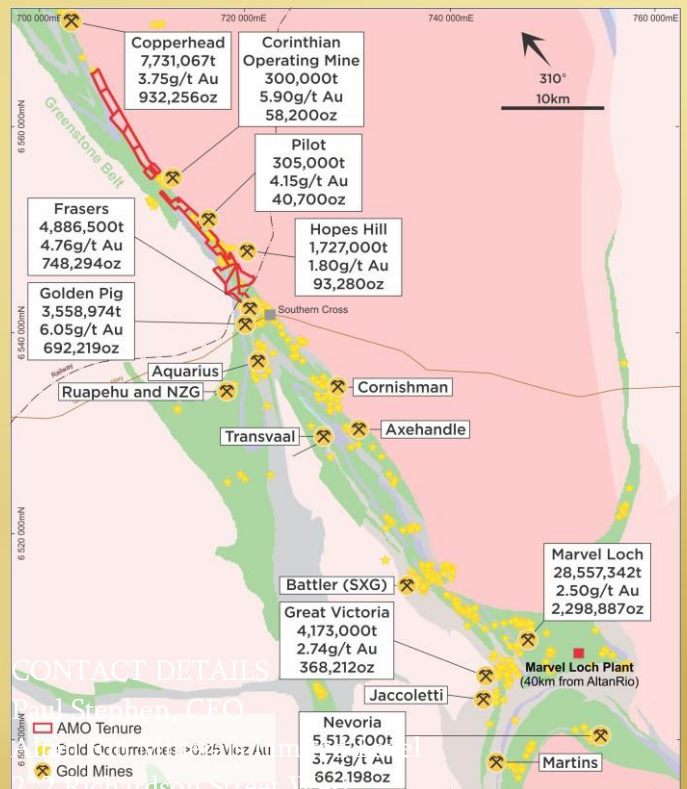
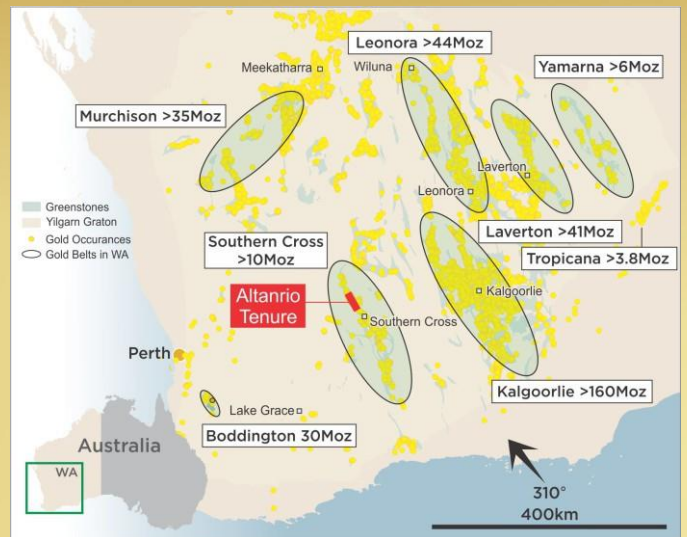
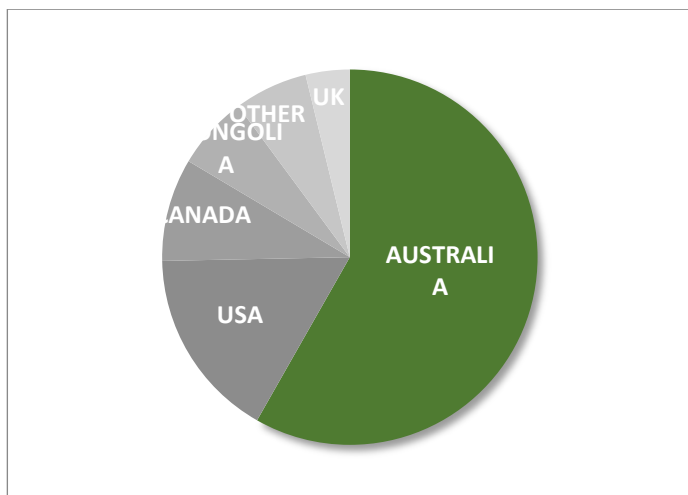
The highest gold grade achieved was 1m at 28.02 g/t at a depth of 206 m.

CAPITAL STRUCTURE

issue Price	\$0.01
12 Month High	\$0.025
Shares on Issue	89.1
Options on Issue	Nil
Market Capitalisation	\$0.89
Convertible Loan (2021)	\$1M

BOARD AND MANAGEMENT

John L.C. Jones	Chairman
Paul Stephen	CEO
Kerry Griffin	Technical Director
James (Jim) Harris	Director
Evan Jones	Director



Perth, Australia
 T: +61 8 9322 1788
 E: info@altanrio.com
 www.altanrio.com

